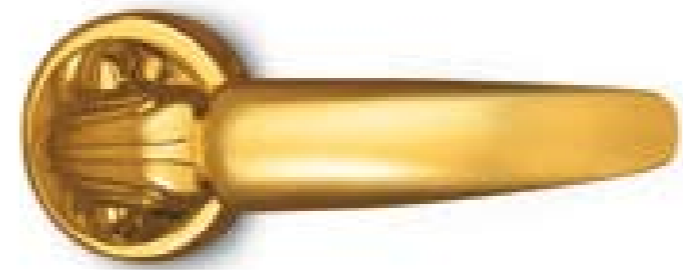
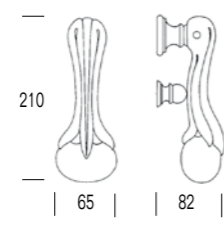


# Collezioni

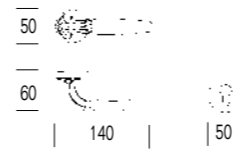
Collection  
Collection  
Kollektion  
Colecciones  
Коллекции



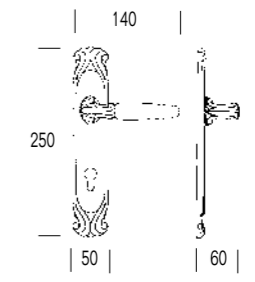
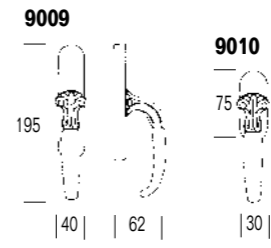
9008



9005

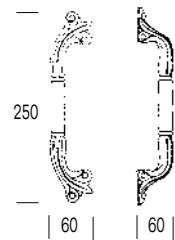


9006

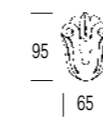




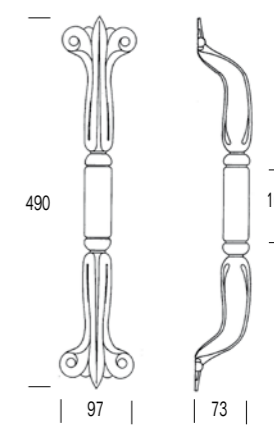
9007



9001



9000



Queen  
Design: Centro Progetti Salice

**Decoratori d'autore**  
**Decorations of author**  
**Decoration de maître**  
**Meisterwerksaus schmuecken**  
**Prestigio de autor**  
**Авторский дизайн**

Dalla fusione di specializzazione e tecnologie con creatività e ricerca è nata la collezione "Queen".  
 La forma dallo stile classico e raffinato, esclusivo, funzionale e di qualità, è realizzata interamente in ottone con varie finiture.

The collection "Queen" is born from the combination of experience and technology with creativeness and aesthetic research.  
 The exclusive and high quality shape with a classical and fine style is produced entirely in massive brass, available in different finishings.

Par la fusion de expérience et technologie avec fantasie et recherche esthétique est né la collection "Queen".  
 La forme exclusive et d'Haute qualité avec un style classique et raffiné est produit entierement en laiton, disponible en finitions différentes.

Die sammlung "Queen" ist von der Vereinigung zwischen Erfahrung und Technologie mit Phantasie und Aesthetic geboren.  
 Die esclusive Form mit einem klassischen und feinen Stil wird ganz aus Messing hergestellt, und sie ist in verschiedenen Farben verfügbar.

De la union de experiencia y tecnologia con creatividad e investigacion ha nacido la coleccion "Queen".  
 La forma del estilo clasico, refinado, exclusivo, funcional, de calidad esta realizado enteramente en laton con varias terminaciones.

Коллекция "QUEEN" родилась в результате слияния специализации и технологии с творческим подходом и научными исследованиями.  
 Изысканные эксклюзивные и практичные модели в классическом стиле полностью изготовлены из латуни, с различными видами отделки.

**A**

Sistema di fissaggio di un singolo maniglione "Queen" su porta in legno.

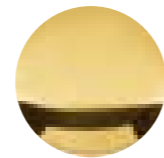
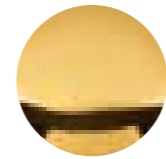
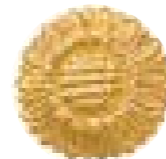
How to fix a single door-pull "Queen" on a wooden door.

Système pour fixer une tirant sur porte en bois.

Beispiele für den Bau eines Türgriff "Queen" an einer Tür aus Holz.

Sistema de fijacion de un solo manillon "Queen" en su puerta de madera.

Пример прикрепления длинной ручки "QUEEN" на деревянную дверь.


**OL**

**PVD**

**DOR 24K**

**D**

**DOR/POV**

**POV**

**AV**

**B**

**BAS**
**B**

Sistema di fissaggio di due maniglioni "Queen" su porta in cristallo.

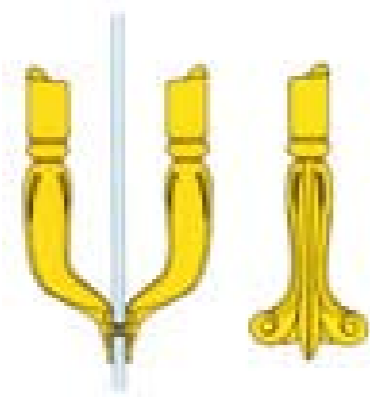
How to fix a pair of door-pull "Queen" on a glass door.

Système pour fixer une paire de tirants sur une porte en verre.

Beispiele für die Paarung zwei Türgriffen "Queen" an einer Tür aus Glass.

Sistema de fijacion del manillon doble "Queen" en su puerta de cristal.

Пример прикрепления двойной длинной ручки "QUEEN" на стеклянную дверь.



Dettaglio che evidenzia la semplicità di comporre un maniglione "Queen" per ottenere la misura desiderata.

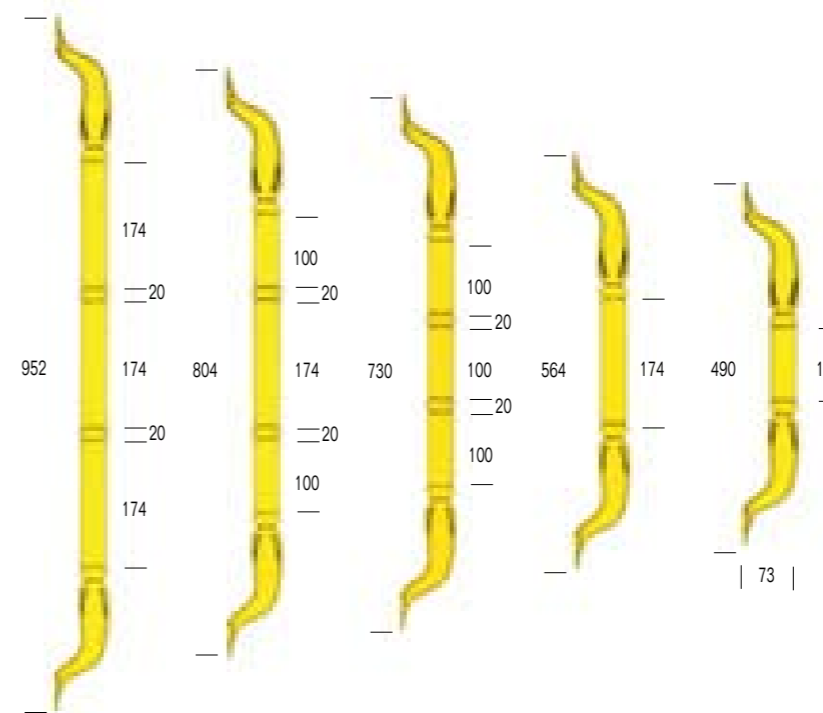
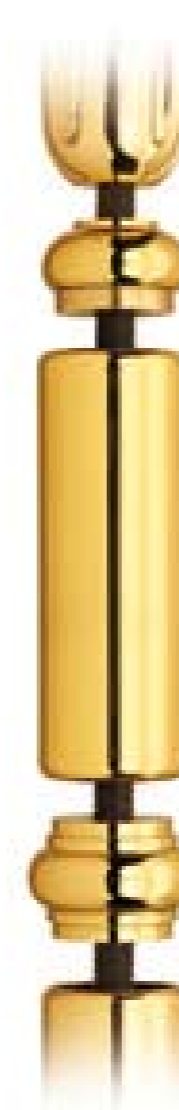
Picture detail to show the simple ways to compose the door-pull "Queen" to obtain the desired size.

Détail qui montre la simplicité à composer le tirant dans la taille désirée.

Zeichnungsdetail: die einfachste Weise, der Türgriff "Queen" nach gewünschten Grössen zu bauen.

Detalle que evidencia la simplicidad de componer un manillon "Queen" para obtener la medida deseada.

Убедитесь, как просто собрать ручку "QUEEN" любого размера.



Esempi e dimensioni di possibili combinazioni.  
 Examples and sizes different possible combinations.  
 Exemples et tailles de combinaisons différentes.  
 Beispiele und Grössen von dem möglichen Zusammenbau.  
 Ejemplo y dimensiones de posibles combinaciones.  
 Примеры и размеры возможных комбинаций.

**Queen**  
 Design: Centro Progetti Salice

*Ho cercato di anteporre alla funzionalità un discorso scultoreo, ottenendo un oggetto d'arte a tutto tondo da porre su ogni porta.*

*I have tried to put the sculptural goal before the functionality, obtaining a round object of art suitable for any door.*

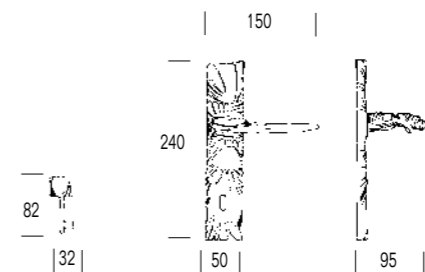
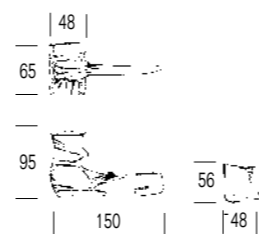
*J'ai essayé de mettre le but sculptural avant la fonctionnalité, obtenant un objet rond d'art approprié pour n'importe quelle porte.*

*Ich habe versucht, das bildhauerische Ziel vor der Funktionalität zu legen, die einen runden Gegenstand von Kunst erhält, der für irgendeine Tür angepasst ist.*

*Traté de poner el fin escultural antes de la funcionalidad, obteniendo un objeto redondo de arte adaptada para cualquier puerta.*

*Я старался соединить в одно целое красоту с практичностью, чтобы каждая дверь стала единственным в своём роде произведением искусства.*

Giuseppe Polli





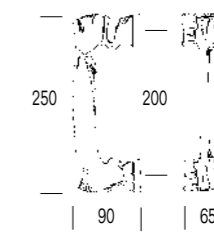
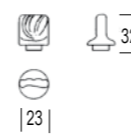
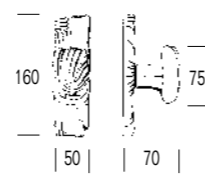
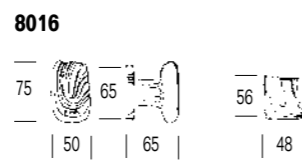
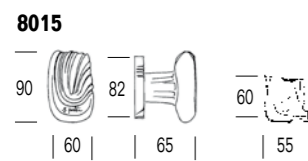
8017



8022/8011



8021



**Informazioni tecniche**  
**Technical information**  
**Informations techniques**  
**Technische Auskünfte**  
**Informaciones técnicas**  
**Технические данные**

Materiale: ottone stampato a caldo  
 Maniglia con placca: con molla di ritorno  
 Maniglia con rosetta: con molla di ritorno

Material: forged brass  
 Handle with plate: with return spring  
 Handle with rose: with return spring

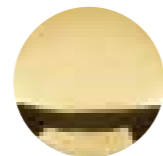
Produit de départ: presse à chaud laiton  
 Béquille sur plaque: avec ressort de retour  
 Béquille sur rosace: avec ressort de retour

Stoff: Messing warm gepresst  
 Tuergriff mit Platte mit Rueckzugfeder  
 Tuergriff mit Rose mit Rueckzugfeder

Material: latón estampado en caliente  
 Manilla con placa: con retorno por resorte  
 Manilla con roseta: con retorno por resorte

Материал: латунь горячей штамповки  
 Ручка на пластине: с доводчиком  
 Ручка на розетке с доводчиком

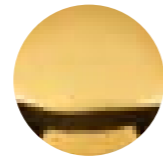
**Finiture in produzione**  
**Finishes in production**  
**Finissage en production**  
**Feinbearbeitungen in Produktion**  
**Acabados en fase de producción**  
**Отделки**



OL



PVD



DOR 24K



DOR/POV



POV



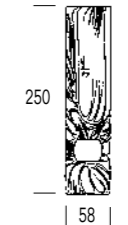
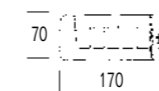
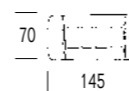
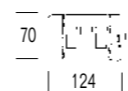
AV



B



BAS





OL



BAS



BAS



8030



AV

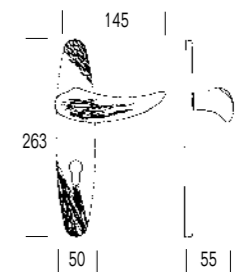
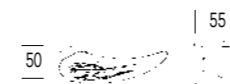
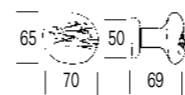


AV

8034



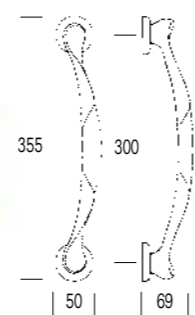
8031







8035

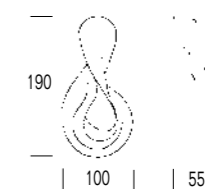


Cimbium

Design: Giacomo Benevelli



8036



Cymbium

Design: Giacomo Benevelli



OL



BAS



AV

8029



BAS



AV

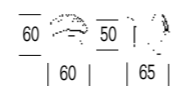


8025

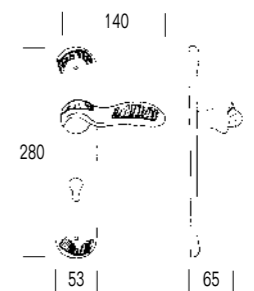
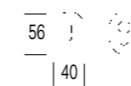
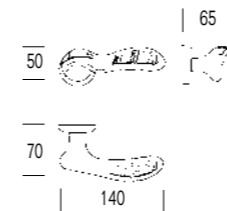
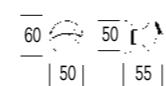


8026

8029/A



8029/B



Ammonite  
Design: Giacomo Benevelli